



Chocolate World®

VALENTINE

FRAME MOULDS



CW1726

32x15,5x8 mm
3x12 pc/2,5 gr
 275x135x24



CW1658

26x30x7 mm
3x7 pc 7 fig./4 gr
 275x135x24



CW1599

30x30x9 mm
3x7 pc/2x4,5 gr
 275x135x24
 double model



CW1280

30x26x9 mm
3x8 pc/2x5 gr
 275x135x24
 double model
 same model as 1314



CW1314

30x26x9 mm
4x8 pc/2x5 gr
 275x135x24
 double model
 same model as 1280



CW1892

33x33x10 mm
3x6 pc/2x5 gr
 275x135x24
 double model



CW1959

31,9x31,9x5 mm
3x7 pc/5,2 gr
 275x135x24



CW1914

34x28,5x12 mm
3x7 pc/2x6,5 gr
 275x135x24
 double model



CW1579

33x33x10 mm
3x6 pc 3 fig./2x7 gr
 275x135x24
 double model - RV



CW1106

33x33x11 mm
3x7 pc/2x7,5 gr
 275x135x24
 double model
 same model as 2175



CW1893

43,03x23,5x13,5 mm
3x7 pc/8,5 gr
 275x135x24



CW1937

42x21,5x15 mm
3x7 pc/8,5 gr
 275x135x24



CW1513

35x33x11 mm
3x7 pc/2x8,6 gr
 275x135x24
 double model



CW1544

27x27x16 mm
4x7 pc/8,65 gr
 275x135x24



CW1526

31x27x17 mm
4x7 pc/9 gr
 275x135x24
 same model as 2443



CW1744

33x22,5x16 mm
3x8 pc/10,5 gr
 275x135x24



CW1018

32x28x15 mm
4x8 pc/11 gr
 275x135x24
 same model as 2245



CW1517

45x27x17 mm
3x7 pc/11 gr
 275x135x24



FRAME MOULDS



CW1023

30x22x20 mm
3x8 pc/11 gr
 275x135x24



CW1417

33x31x15 mm
3x8 pc/11 gr
 275x135x24
 same model as 2473



CW1577

28x35x17 mm
3x7 pc 3 fig./11 gr
 275x135x24



CW1576

29x34,5x17 mm
3x7 pc 3 fig./12 gr
 275x135x24



CW1058

28x28x20 mm
3x7 pc/12 gr
 275x135x24
 same model as 2244



CW12138

28x28x19 mm
3x7 pc/12,5 gr
 275x135x24



CW1012

31x29x19 mm
3x8 pc/13 gr
 275x135x24
 same model as 2316



CW1913

36x29,5x19 mm
3x7 pc/13 gr
 275x135x24
 same model as 2476



CW1932

28x28x24 mm
3x7 pc/13,5 gr
 275x135x28



CW12041

33,5x30,5x18 mm
3x7 pc/13,5 gr
 275x135x24



CW1218

30x36x19 mm
3x7 pc/14 gr
 275x135x24
 same model as 2372



CW1473

31x38x19 mm
3x7 pc/14 gr
 275x135x24



CW1086

32x30x18 mm
3x8 pc/14 gr
 275x135x24
 same model as 2189



CW1005

42x25x17 mm
3x7 pc/15 gr
 275x135x24
 same model as 2261



CW1214

31x35x18 mm
3x8 pc/15 gr
 275x135x24
 same model as 2087



CW1296

49x26x17 mm
3x7 pc/15 gr
 275x135x24
 same model as 2351



CW1436

31x35x18 mm
3x8 pc/16 gr
 275x135x24
 same model as 2320



CW1470

31x39x18 mm
3x7 pc/16 gr
 275x135x24



FRAME MOULDS



CW1033

34x34x20 mm
3x7 pc/18 gr
 275x135x24



CW1404

52x46x11 mm
2x5 pc/24 gr
 275x135x24



CW1377

52x52x12 mm
2x5 pc/25 gr
 275x135x24
 same model as 2218



CW12088

49,5x43,5x18 mm
2x5 pc/2x25,4 gr
 275x135x24
 double model



CW1145

65x57x14 mm
2x4 pc/2x35 gr
 275x135x24



CW1288

45x40x27 mm
1x14 pc/41 gr
 275x135x30



CW1297

102x36x19 mm
1x7 pc/41 gr
 275x135x24



CW1146

80x69x16 mm
1x5 pc/2x68 gr
 275x135x24
 double model



CW1147

95x83x19 mm
1x3 pc/2x118 gr
 275x135x24
 double model
 same model as 2157



CW1148

119x104x23 mm
1x2 pc/205 gr
 275x135x26



CW1396

118x103x21 mm
1x2 pc/208 gr
 275x135x26



CW1945

117,5x110x35 mm
1x2 pc/2x245 gr
 275x135x40
 double model



CW1993

117x117x59 mm
1x2 pc/185+510 gr
 275x135x40
 double model - RV



CF0607

28x28x16 mm
3x8 pc/2 fig./9 gr
 275x135x24



CF0246

45x45x7,5 mm
2x5 pc/9,5 gr
 275x135x24



CF0605

33x25x14 mm
3x8 pc/10 gr
 275x135x24



CF0606

29x29x18 mm
3x8 pc/10 gr
 275x135x24



CF0245

34x33x20 mm
3x7 pc/13,5 gr
 275x135x24



CF0608

12,5x12,5x19 mm
3x8 pc/2x4,5 gr
 275x135x24
 double model - RV



CF0609

35x35x24,5 mm
3x6 pc/2x13 gr
 275x135x24
 double model - RV



FRAME MOULDS



CW2143
20x20x8 mm
6x10 pc/2x2 gr
275x175x24
double model
same model as 2268



CW2268
20x20x8 mm
6x6 pc/2x2 gr
275x175x24
double model
same model as 2143



CW2080
30x26x9 mm
4x8 pc/2x5 gr
275x175x24
double model



CW2367
36x41x7 mm
3x6 pc/2x7,5 gr
275x175x24
double model



CW2383
33x33x11 mm
4x6 pc/7,5 gr
275x175x24
same model as 1106



CW2175
33x33x11 mm
4x7 pc/2x7,5 gr
275x175x24
double model
same model as 1106



CW2443
31x27x17 mm
4x8 pc/9 gr
275x175x24
same model as 1526



CW2245
33x28x15 mm
4x8 pc/11 gr
275x175x24
same model as 1018



CW2249
30x22x20 mm
4x8 pc/11 gr
275x175x24



CW2473
33x31x15 mm
4x7 pc/11 gr
275x175x24
same model as 1417



CW2316
31x29x19 mm
4x8 pc/13 gr
275x175x24
same model as 1012



CW2476
36x29,5x19 mm
4x6 pc/13 gr
275x175x24
same model as 1913



CW2348
33x34x17 mm
4x6 pc/14 gr
275x175x24



CW2372
30x36x19 mm
4x7 pc/14 gr
275x175x24
same model as 1218



CW2189
32x30x18 mm
4x8 pc/14 gr
275x175x24
same model as 1086



CW2087
31x35x18 mm
4x8 pc/15 gr
275x175x24
same model as 1214



CW2261
42x25x17 mm
4x8 pc/15 gr
275x175x24
same model as 1005



CW2351
49x26x17 mm
4x8 pc/15 gr
275x175x24
same model as 1296

FRAME MOULDS



CW2320

31x35x18 mm
4x8 pc/16 gr
 275x175x24
 same model as 1436



CW2218

40x28x16 mm
3x4 pc/25 gr
 275x175x24



CW2211

119x68x6 mm
2x2 pc 2 fig./40 gr
 275x175x24



CW2161

104x88x18 mm
3x1 pc/100 gr
 275x175x24



CW2157

95x83x19 mm
1x5 pc/2x118 gr
 275x175x24
 double model
 same model as 1147



CW2122

145x126x20 mm
1x2 pc/300 gr
 275x175x24



CW2121

145x126x20 mm
1x2 pc/305 gr
 275x175x24



POP1250

35,5x31x17 mm
6x4 pc/11,5 gr
 275x175x26



POP1251

36x31x19,5 mm
6x4 pc/11,5 gr
 275x175x26

FRAME MOULDS "TABLETS"



CW12044

125x110x10 mm
1x2 pc/100 gr
 275x135x24



CW2489

133x76x12 mm
1x3 pc/95 gr
 275x175x24





CW12005

118x50x8 mm
1x4 pc/45 gr
 275x135x24



CW12009

118x50x8 mm
1x4 pc/45 gr
 275x135x24



CW12123

118x50x8 mm
1x4 pc/45 gr
 275x135x24



CW12143

118x50x8 mm
1x4 pc/45 gr
 275x135x24



DISPLAYCW01

For the complete “CHOCOLATE WISHES!” mould collection, Chocolate World created an elegant and compact carton display on which you can present 8 different chocolate tablets.

A perfect attention grabber that will charm walk-in customers. This will make it easier, and so much sweeter, for your clients to “say it with chocolate”! The moulds, the display box, the packaging (CFB001) and stickers for handwritten personal messages (STICKCW0001), are all individually available.

CFB001

Bags with adhesive strip

- 122 x 60 mm
- 250 pcs



STICKCW0001

Stickers for handwritten personal messages

- 100 x 40 mm
- 250 pcs



FRAME MOULDS "LOLLIES"



CW1480

54x63x12 mm
1x4 pc/29 gr
 275x135x24



CF0248

59x51x9,5 mm
1x4 pc/21,5 gr
 275x135x24



CF1103

90x35x12 mm
1x6 pc/21 gr
 275x175x24



HB9075

57x35x12 mm
1x4 pc
 275x175x24



HB9038S

54x53,5x10,5 mm
1x8 pc
 275x175x24



HB9066

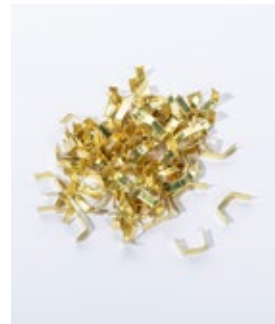
55x55,7x12 mm
1x4 pc
 275x175x24



CFB003

Pack your chocolate lollipops or other sweets in these transparent plastic bags.

- 164 x 71 mm
- 200 pcs



10417

Preformed closure (U-shape) clip in polypropylene, reinforced with 2 metal wires.

- For manual closing of bags of bread, biscuits, candy, etc...
- Due to their shape, U-clips can be closed very quickly with one hand.
- Colour gold
- 1000 pcs



Paper lollipop sticks, suitable for use with Chocolate World lollipop moulds.

M1205

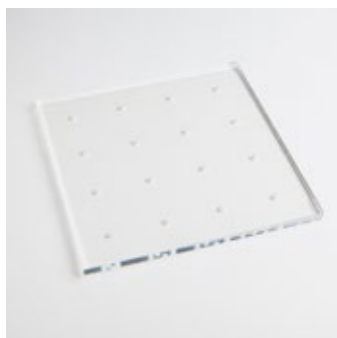
Ø 3,9 x 104 mm
 ± 500 pcs

M1206

Ø 3,9 x 104 mm
 ± 2000 pcs

M1207

Ø 3,9 x 104 mm
 ± 14000 pcs



LSTAND

Present your chocolate lollies in a stylish way in this handy lollipop stand.

- Made of transparent, solid plexiglass
- Dimensions: 175 x 175 x 8 mm
- With 16 holes with Ø 3,9 mm
- Suitable for use with lollipop sticks M1205 - M1206 - M1207



CW1549

54x32x16 mm
2x7 pc/2x14 gr
 275x135x24
 double model - RV



CW1550

54x35x17,2 mm
2x6 pc/2x19 gr
 275x135x24
 double model



VV0102

Stalks for roses (rose can be created with the mould CW1550)

- 430 mm
- 200 pcs



VV0201

Transparent box to pack a rose

- 460 x 55 x 55 mm
- 200 pcs
- Material: PET

STENCIL FOR CHOCOLATE MOULD CW1106



STENCW1106

Chocolate World stencil to keep your chocolate mould surface clean while working with colours.

Have you ever counted the hours spent on cleaning moulds after each production run? Well...time to reduce this to a minimum! This stencil covers the surface of your mould so the colour you spray ends up inside the cavities only.

- Easy to use
- Reuseable
- Dishwasher safe

Suitable for use with chocolate mould CW1106. Chocolate mould not included

MAGNETIC MOULDS



CW1000L01

35x28x14 mm
3x5 pc/13,5 gr
 275x135x24



CW1000L02

24x24x14 mm
4x6 pc/9,5 gr
 275x135x24
 same model as 4406S



CW1000L03

50x50x10 mm
2x5 pc/22 gr
 275x135x24



CW1000L04

32x32x14 mm
3x5 pc/13 gr
 275x135x24



CW1000L05

35x24x17 mm
3x6 pc/13 gr
 275x135x24



CW1000L07

32x32x14 mm
3x6 pc/10 gr
 275x135x24



CW1000L08

37x25x16 mm
3x6 pc/12 gr
 275x135x24



CW1000L09

48x12x9 mm
4x4 pc/5 gr
 275x135x24



CW1000L10

32x24x11 mm
3x6 pc/9 gr
 275x135x24



CW1000L13

30x32x15 mm
3x6 pc/11 gr
 275x135x24



CW1000L15

37x25x12 mm
3x6 pc/7 gr
 275x135x24



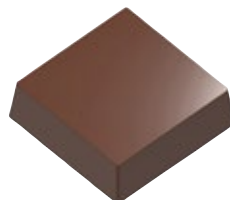
CW1000L16

85x55x6 mm
2x2 pc/32 gr
 275x135x24



CW1000L17

32x32x7 mm
3x6 pc/7 gr
 275x135x24



CW1000L19

29x29x9 mm
3x5 pc/9 gr
 275x135x24



CW1000L20

23x23x20 mm
3x6 pc/12 gr
 275x135x24



CW1000L21

24x24x20 mm
4x6 pc/9,5 gr
 275x135x24



CW1000L25

27x23,5x13 mm
4x6 pc/7 gr
 275x135x24



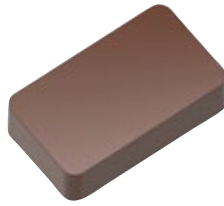
CW1000L27

53x20x12 mm
3x4 pc/10,5 gr
 275x135x24



CW1000L28

22,5x22,5x20 mm
4x6 pc/9,5 gr
 275x135x26



CW1000L30

41x24x10 mm
3x4 pc/11 gr
 275x135x24



CW1000L32

84,5x84,5x6 mm
1x2 pc/37,29 gr
 275x135x24



CW1000L37

80x12,8x10 mm
1x10 pc/11 gr
 275x135x24



CW1000L41

30x30x15,5 mm
3x6 pc/12 gr
 275x135x24



CW1000L42

30x30x11 mm
1x14 pc/11,5 gr
 275x135x24



CW1000L43

47x27,5x11,5 mm
3x6 pc/9,5 gr
 275x135x24



CW2000L01

59x59x7 mm
1x5 pc/25 gr
 275x175x24



CW2000L02

35x28x14 mm
4x5 pc/14 gr
 275x175x24



CW2000L03

39x40x9 mm
3x4 pc/16 gr
 275x175x24



CW2000L04

63x62x8 mm
1x5 pc/25 gr
 275x175x24



CW2000L05

27x27x13 mm
4x6 pc/14 gr
 275x175x24



CW2000L06

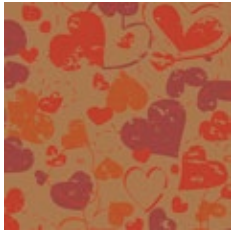
105x50x7 mm
2x2 pc/45 gr
 275x175x24

TRANSFER SHEETS

Decorate your chocolate with these colourful, pre-printed transfers!

- 30 Sheets per package
- Dimensions: 400 x 300 mm
- Cut the sheets to the desired size with a sharp knife or with scissors

Tip: would you like to use this transfer in combination with a **Chocolate World magnetic mould**? Then use the metal cover plate of your magnetic mould as a fit!

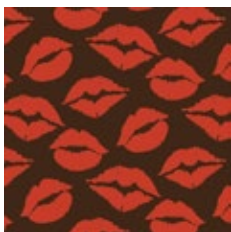


F037174

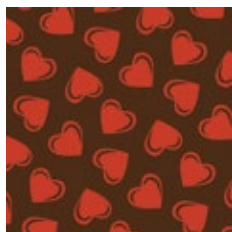
TRANSFER SHEETS FOR **MAGNETIC MOULDS**

- 60 Sheets per package
- Fits all Chocolate World magnetic moulds size 135 x 275 mm
- Learn more about how to use transfer sheets and magnetic moulds in our blog!
- E171 free

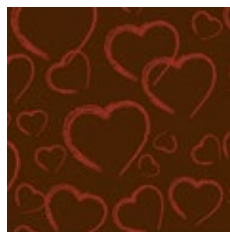
Learn more about how to use transfer sheets and magnetic moulds in our blog on our website.



LF032927



LF032928



LF033052

- Fits Chocolate World magnetic mould CW1000L19
- E171 free
- 60 Sheets per package



LF032961

- Fits Chocolate World magnetic mould CW2000L04
- E171 free
- 60 Sheets per package
- 5 different images per sheet



LF032921



LF032922



HM004

127x166,5x66 mm
1x1 pc



HM012

161x75x170 mm
1x1 pc

HOLLOW FIGURES "HM" WITH MAGNETS



HM015

200x70x170 mm

1x1 pc



H527

95x95,5x38 mm
1x1 pc



H528

120x114,5x42 mm
1x1 pc



H265

240x225x72 mm
1x1 pc



H425

110x110x17 mm
1x2 pc



H426

200x198x38 mm
1x1 pc



H808

182x115x61 mm
1x1 pc



H033

160x157x33 mm
1x1 pc



H646

100x93x57 mm
1x2 pc



H529

145x145x25 mm
1x1 pc



H036

90x83x17 mm
1x2 pc



H035

140x140x26 mm
1x1 pc



H029

120x115x20 mm
1x2 pc

HOLLOW FIGURES VIVAK



T0033

198x176x32,5 mm
1x1 pc



T0034

225x200x34 mm
1x1 pc



T0035

170x147x30 mm
1x1 pc



T0036

195x170x40 mm
1x1 pc

HOLLOW FIGURES "HB"



HB212

65x65x12 mm
1x3 pc



HB212A

80x78x16,5 mm
1x1 pc



HB213

95x95x35 mm
1x1 pc



HB215

115x115x45 mm
1x1 pc



HB214

150x145x52 mm
1x1 pc



HB8010

127x112x61 mm
1x2 pc



HB245

200x200x75 mm
1x1 pc

Have a look on the webshop for more info about the silicone moulds: www.chocolateworld.be/winkel/moulds/silicone-moulds



AMORINI

63x65x39 mm
4x2 pc



AMORINI110

74x84x35 mm
2x3 pc



CUPIDO

45x44x24 mm
5x3 pc



GEL03

92x48x24 mm
4x2 pc



GEL03M

55x68x18 mm
6x1 pc



HBO160

142x137x50 mm
1x1 pc



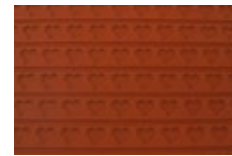
MICROLOVE05

26,5x25x13,75 mm
7x5 pc



SSF036-N

65x40 mm
3x2 pc



TAPIS08

600x400x30 mm
1x1 pc



SI8006

34x30x18 mm
3x8 pc/10 gr
183x340x30

PACKAGING



TTRAMORE205

Tarte Ring Amore 205 x 190 x 20 mm by Silikomart Professional is a ring in thermoplastic composite crush-proof material suitable for baking.
The ring is non-stick and stainless, allows a homogeneous baking and it has a high thermal stability.



TTRAMORE80

Tarte Ring Amore 80 x 70 x 20 mm by Silikomart Professional is composed of:
• 8 rings in thermoplastic composite and crush-proof material suitable for baking.

The rings are non-stick and stainless, allow a homogeneous cooking and they have a high thermal stability

CUTTERS



M11471

Cutter heart

- Made out of chrome steel
- 29 x 25 mm



S02007

Set of pastry cutters heart

- 9 pcs
- Stainless steel
- Thickness: 0,4 - 0,5 mm
- Height: 30 mm
- Ø 35, 42, 51, 68, 80, 90, 100, 110 mm

PACKAGING



VARO

Aluminium sheets per 500 gr

- ± 4500 pcs
- ± 80 x 80 mm

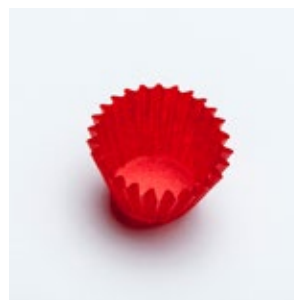
Other dimensions on request



VC0102

Aluminium cups

- Ø bottom: 23 mm
- Ø top: 35 mm
- Height: 20 mm
- 1250 pcs



VV0301R

Red paper cups

- Ø bottom: 22 mm
- Ø top: 30 mm
- Height: 18 mm
- +/- 1000 pcs

The cocoa butter based colours are made for the decoration of chocolate and other fatty products.

Use:

- After tempering, the coloured cocoa butter can be applied with a brush directly onto the surface to be decorated.
- You can also spray the coloured cocoa butter into the mould immediately after melting with a spray gun without tempering.
- Alternatively, the colour intensity can be reduced by mixing up with white chocolate (max. 50% white chocolate) and applied after tempering to the surface to be decorated with a spray gun (M1263) to obtain a velvet effect.

- Standard content: 200 gr
- AZO free
- E171 free



COL5103



COL5104



COL5204

POWDER COLOURS



COL1007AF

Shiny powder colouring, suitable for:

- Mixing with cocoa butter and application with a spray gun in the chocolate mould or on demoulded chocolate.
- Mixing with alcohol and application with airbrush in the chocolate mould or on demoulded chocolate.
- Direct application on the chocolate mold with a soft brush.

Note: not suitable for mixing with white chocolate.

- AZO free
- Standard content: 25 gr
- Pack quantities per kg available on request.



COL1007PP

Shiny powder colouring in handy pump dispenser, suitable for decorating chocolate. Suitable to spray directly into chocolate mould before moulding.

- AZO free
- Content: 10 gr



COL1560AF

Matt powder colour, suitable for mass colouring of white chocolate, cocoa butter, macaron batter, pastry and other fat-containing preparations.

- AZO free
- Standard content: 25 gr
- Pack quantities per kg available on request

INDEX

1000SERIE	CF1103	12	TRANSFERSHEETS	COL1007AF	23
CW1005		4	F037174	COL1007PP	23
CW1012		4	LF032921	COL1560AF	23
CW1018	2000SERIE	2	LF032922	COL5103	23
CW1023	CW2080	4	LF032927	COL5104	23
CW1033	CW2087	6	LF032928	COL5204	23
CW1058	CW2121	4	LF032961		
CW1086	CW2122	4	LF033052		
CW1106	CW2143	2			
CW1145	CW2157	6			
CW1146	CW2161	6	HOLLOW FIGURES		
CW1147	CW2175	6	H029	S02007	22
CW1148	CW2189	6	H033	M11471	22
CW12005	CW2211	6	H035		
CW12009	CW2218	11	H036	STENCIL FOR CHOCOLATE MOULD	
CW12041	CW2245	4	H265	STENCW1106	13
CW12044	CW2249	9	H425	PACKAGING	
CW12088	CW2261	6	H426	VARO	22
CW12123	CW2268	6	H527	VC0102	22
CW12138	CW2316	11	H528	VV0301R	22
CW12143	CW2320	4	H529		
CW1214	CW2348	4	H646	PACKAGING	
CW1218	CW2351	4	H808	"CHOCOLATE WISHES"	
CW1280	CW2367	4		CFB001	11
CW1288	CW2372	2	T0033	DISPLAYCW01	11
CW1288	CW2383	6	T0034	STICKCW0001	11
CW1296	CW2443	4	T0035		
CW1297	CW2473	4	T0036	PACKAGING "LOLLIES"	
CW1314	CW2476	2		10417	12
CW1377	CW2489	6	HOLLOW FIGURES "HB"	CFB003	12
CW1396		6	HB212	LSTAND	12
CW1404	POP1250	6	HB212A	M1205	12
CW1417	POP1251	4	HB213	M1206	12
CW1436		4	HB214	M1207	12
CW1470	MAGNETIC MOULDS	4	HB215		
CW1473	CW1000L01	4	HB245	PACKAGING "ROSES"	
CW1480	CW1000L02	12	HB8010	VV0102	13
CW1513	CW1000L03	2	HB9038S	VV0201	13
CW1517	CW1000L04	2	HB9066		
CW1526	CW1000L05	2	HB9075		
CW1544	CW1000L07	2	HBO160		
CW1549	CW1000L08	13			
CW1550	CW1000L09	13	HOLLOW FIGURES WITH MAGNETS		
CW1576	CW1000L10	4	HM004		
CW1577	CW1000L13	4	HM012		
CW1579	CW1000L15	2	HM015		
CW1599	CW1000L16	2			
CW1658	CW1000L17	2	SILICONE MOULDS		
CW1726	CW1000L19	2	AMORINI110		
CW1744	CW1000L20	2	AMORINI		
CW1892	CW1000L21	2	CUPIDO		
CW1893	CW1000L25	2	GEL03		
CW1913	CW1000L27	4	GEL03M		
CW1914	CW1000L28	2	MICROLOVE05		
CW1932	CW1000L30	4	SI8006		
CW1937	CW1000L32	2	SSF036-N		
CW1945	CW1000L37	6	TAPIS08		
CW1959	CW1000L41	2			
CW1993	CW1000L42	2	BAKING MOULDS		
	CW1000L43	6	TTRAMORE205		
			TTRAMORE80		
CF0245	CW2000L01	7			
CF0246	CW2000L02	7			
CF0248	CW2000L03	12			
CF0605	CW2000L04	7			
CF0606	CW2000L05	7			
CF0607	CW2000L06	7			
CF0608		7			
CF0609		7			

January 2026 © Chocolate World, Hoboken, Antwerp.

Every care has been taken in the composition of this catalogue. Chocolate World accepts no liability for possible errors. All rights reserved.

No part of this publication may be reproduced, stored in an automated database and/or made public in any form or in any way, either electronically, mechanically or in any other way without the prior written permission of Chocolate World.



BELGIAN CHOCOLATE SCHOOL

POWERED BY CHOCOLATE WORLD

The Belgian Chocolate School is an established value for teaching basic and advanced skills in chocolate making.

Contact info@chocolateworld.be to book a personalised, private class at Chocolate World's premises.

Use this Chef-to-Chef experience to enhance your skills and be inspired!

The Belgian Chocolate School offers even more in terms of education. Do you have questions or are you in need of a 4-day crash course but can't get away?

Then why don't we come to you for a consultation:

From fine-tuning your production process and expanding your product range to learning the latest colouring techniques and recipes, the chocolate world is your oyster!

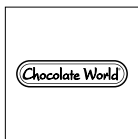
Request a quote at info@chocolateworld.be for a chocolate course in your company.

Belgian Chocolate School will gladly travel around the world to support you as a loyal partner!

BELGIANCHOCOLATESCHOOL.COM



@BELGIANCHOCOLATESCHOOL



MOULDS



**MOULDS
2026**



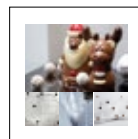
EQUIPMENT



**CHOCOLATE
CONCEPT**



MACHINERY



**HOLLOW
FIGURES**



**BELGIAN
CHOCOLATE
SCHOOL**

SMALLANDLAAN 4 UNIT 2 • 2660 HOBOKEN, ANTWERPEN • BELGIUM

TEL: +32 (0)3 216 44 27 • FAX: +32 (0)3 216 98 33

INFO@CHOCOLATEWORLD.BE • CHOCOLATEWORLD.BE

